

5. Game Adding

Game Adding Notes

1. This game console integrates the following emulators.
MAME, FBA, FC, SFC, PCE, GBA, GBC, MD, PSP, PS, N64

2. In addition to the built-in games, the SD card data also allows users to download their favorite games. The downloaded game must be supported by this emulator and could be recognized by this game. Only (Tekken 6, Iron Fist 5, Deadly Fighting, Soul Eater, Weekly Junior Fight, American Professional All-Star Wrestling, Street Fighter EX, Beast Fighting 2, Tekken 3, Tekken 2) are 3D program game, and the others are single play game. The above game only needs to press the 2P start button after entering the game, then the system will switch to the double-play interface. The system is separated from the program. All game programs are on the SD card. If you want to change the program, you only need to change the SD card.

How to add 2D games

1. Change the file format of the U disk to the form of exFAT, then format the U disk.
2. Create a folder called games in the root directory of the USB flash drive.
3. Open the games folder and create a download folder.
4. Open the download folder and copy the game ROM file needed.

Notice: The added 3D game can be downloaded directly from the Xiaoji emulator as long as the file format is correct. The added ROM of the 2D game must be requested from the manufacturer and it could not download directly from the internet.

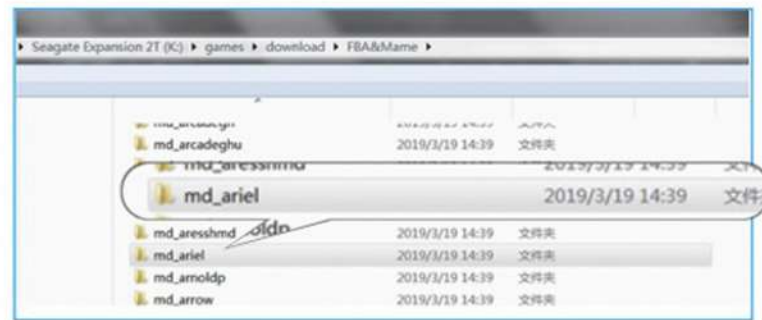
Adding 2D arcade games such as FBA/MAME

Find the game ROM repository. As shown below:

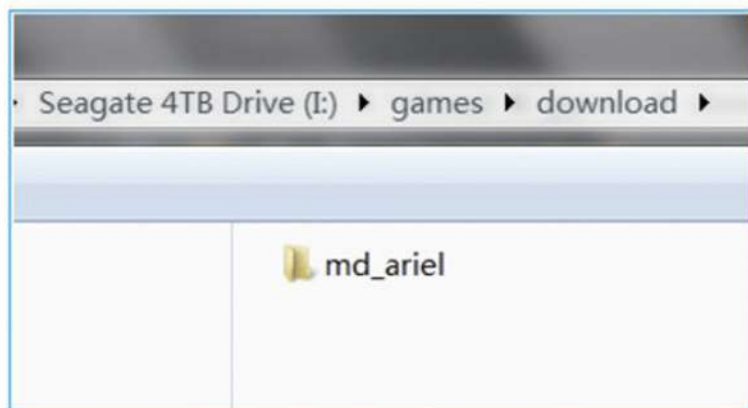


5. Game Adding

The game repository is classified by the game emulator. If want to find the 2D game, please find the game catalog table like the 2D game catalog table: 2D_Game_List_v0.1.xlsx. For example, if want to add md_ariel



Inserting the USB flash drive into the computer, creating the games/download folder, copying the game md_ariel to the U disk games/download file, and then insert the USB flash drive back into the game console. After the main menu comes out, it will take 10 seconds to start scanning. The game will be putted in the first place after the scan.



5. Game Adding

Add 3D games from PSP and N64

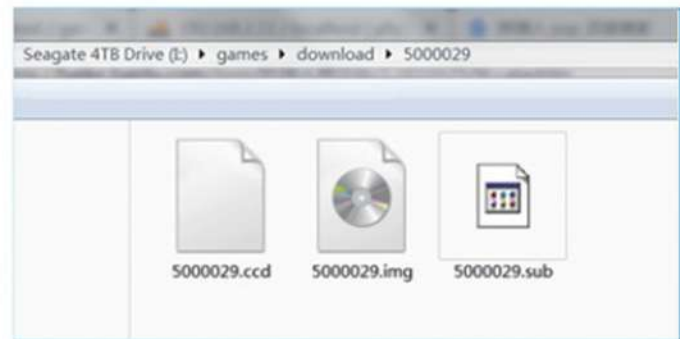
1. Firstly insert the USB flash drive into the computer, create the games/download folder,
2. and directly copy the relevant .iso or .n64 files to the games/download folder of the USB flash drive then it is OK. shown as below:



Note: Since the ISO of PSP comes with its own picture and game name, the system will automatically parse its internal data to display. The ROM of PSP and N64 are automatically scanning so it has no strict requirements on the directory.

Add 3D games from PS emulator

1. Firstly insert the USB flash drive into the computer, create the games/download folder,
2. and directly copy the relevant .iso or .n64 files to the games/download folder of the USB flash drive then it is OK. shown as below:

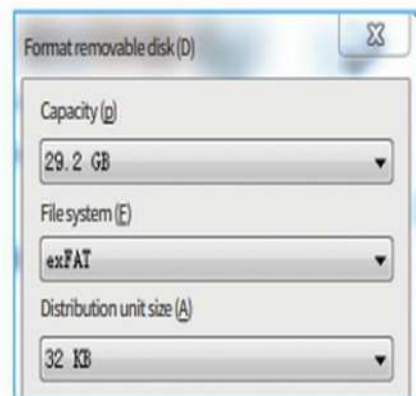


Note: Currently it only supports the ROM with .img suffix

5. Game Adding

Notice when adding a game to a USB flash drive

1. It is recommended to set the file system of the u disk (sd card) to be "exFAT" which allocate a cell size to be 32 KB. shown as below:



2. Firstly turn off the power, and then pull out the U disk. It is forbidden to pull out and insert the U disk for many times under the state of power on.