

## Catálogo

1.pdf .....	1
2.pdf .....	2
3.pdf .....	3
4.pdf .....	4
5.pdf .....	5
6.pdf .....	6
7.pdf .....	7
8.pdf .....	8



3A Game Electronic  
Technology



# THE KING OF AIR 2

PANDORA BOX Vertical Edition

**Quick User Manual**

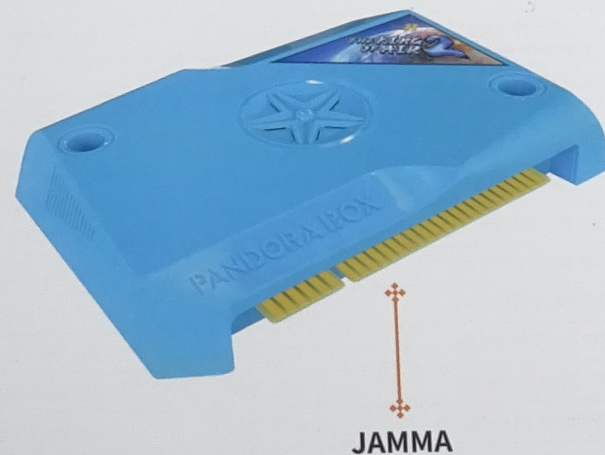
# Contents

1. Mainboard Picture	02
1.1 JAMMA Interface Definiton	03
1.2 Mainboard Specification	04
2.1 Product Functions	05
2.2 New Functions	05
3.Resolution Settings	06
4.Setting Menu	06
4.1 IO Test	07
4.2 Custom Button	07
4.2.1 Default Key Map	07
4.2.2 Game Custom	07
4.2.3 Restores Default Custom Button	08
4.3 System Config	08
4.3.1 Credit Setting	08
4.3.2 Exit Game Mode	09
4.3.3 Pause Menu	09
4.3.4 Auto Exit	09
4.3.5 Select Game Mode	09
4.3.6 Quality Optimization	09
4.3.7 Scanning Line	09
4.3.8 Timer Mode	09
4.3.9 Game Time	10
4.3.10 Gamepad Setting	10
4.4 Game Setting	10
4.4.1 Difficult &Lifes Setting	10
4.4.2 Edit Games List	11
4.4.3 Edit Favorite List	11
4.5 Book Keeping	12
4.6 Language	13
4.7 Boot Demo Movies	13
4.8 Save Setting	13
4.9 Factory Setting	13
5. Abnormal Condition Diagnosis of Using	14

## 1.Mainboard Picture:



Picture 1



Picture 2

### 1.1 JAMMA Interface Definition

2P TABLE (Solder Side)		1P TABLE (Parts Side)	
GROUND	A	1	GROUND
GROUND	B	2	GROUND
+5V	C	3	+5V
+5V	D	4	+5V
N/C	E	5	N/C
+12V	F	6	+12V
N/C	H	7	N/C
N/C	J	8	N/C
N/C	K	9	N/C
SPEAKE-	L	10	SPEAKE+
N/C	M	11	N/C
N/C	N	12	N/C
N/C	P	13	N/C
N/C	R	14	GROUND
N/C	S	15	N/C
PAUSE	T	16	COIN SWITCH #1
2P START	U	17	1P START
2P UP	V	18	1P UP
2P DOWN	W	19	1P DOWN
2P LEFT	X	20	1P LEFT
2P RIGHT	Y	21	1P RIGHT
2P BUTTON #1	Z	22	1P BUTTON #1
2P BUTTON #2	a	23	1P BUTTON #2
2P BUTTON #3	b	24	1P BUTTON #3
2P BUTTON #4	c	25	1P BUTTON #4
2P BUTTON #5	d	26	1P BUTTON #5
2P BUTTON #6	e	27	1P BUTTON #6
GROUND	f	28	GROUND

### 1.2 Mainboard Specification

8-core processor: 4-core CPU + 4-core GPU; Multi-thread

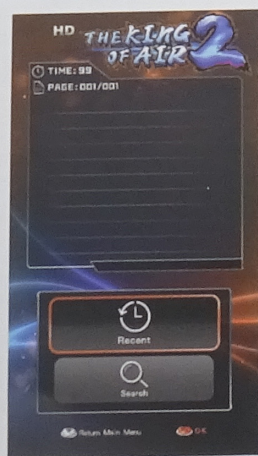
Configuration	CPU	ARM Cortex-A7, each core clocked at up to 1.5GHz		
	GPU	ARM Mali, Graphics card rendering		
	RAM	2Gb DDR3/1866MHz		
	Storage	128MB System Storage/32GB MicroSD(TF) or USB Extra		
	Storage	Linux		
Video Resolution	HDMI	1280*720 (720P)		
	VGA	1280*720 (720P) / 640*480 (31KHz)		
Interface	1*HDMI	1*VGA	1*Jamma interface	
	1*3.5mm audio output interface			
	2*USB input interface for expansion controller / track ball and USB storage			
Language: Simplified Chinese/Traditional Chinese/English/Korean/Spanish				
Size	180mm x 120mm x 35mm			
Vertical Games	516			
Button custom	Support			
Add games	Support			
Screen enhancement	HD / SD			
Game settings	Adjust the difficulty and life of the game			
Game list setting	Edit favorite list / hide game			
Game Emulator	FBA/MAME/PS//FC/SFC/MD			
Game Name Quick Search	English default word initials			
Recent quick start games	Support			
One-click burst	Support			
Coin function	Free play / coin operation / time charging mode			
Radiator	Aluminum			
Controller/Game pad function	Support expansion Controller/Game pad			
Work Environment	Temperature 5 c -45" C/ Humidity 30%- 90%			
Net Weight	0.25Kg			

## 2.1 Product functions:

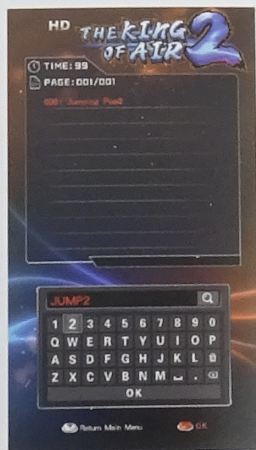
- The mainboard includes classic retro arcade games and home games, the game has been optimized by many software and hardware developers, and with super-high-level player tested, let you return to the original feeling of the game.
- You no need to buy extra video converter, because mainboard support multiple output ports, support HD digital output 720P to any HDMI port display monitor and VGA output support downward compatible to old display monitor.
- Support language: English / Korean / Spanish
- Support HDMI audio/aux audio output, and build in power amplifier output to speaker.
- Support the custom function of arcade button and gamepad, support more than 90% of gamepad types connect to USB to play games.
- Support edit your favorite 99 games at the top of the game menu.
- Support pause function in the game.(for free play mode)

## 2.2 New functions:

- Supports the save state/load state of the game.If you are playing, but now need to go out, before turn OFF the console you can choose save state, when you come back, you can load state to continue play this game.(for free play mode)
- Supports auto saving of the game ranking high score.when you load it again, you will see that your name is still in ranking.
- In the main menu press 1P start button, will show recent and quick search functions, support quickly start recent game and support game name English word initials quick search.(picture3)(picture4)



Picture 3

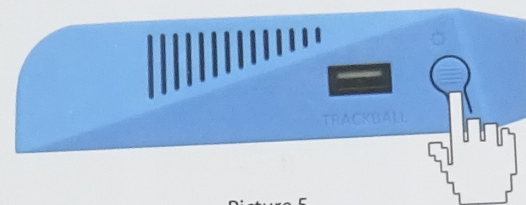


Picture 4

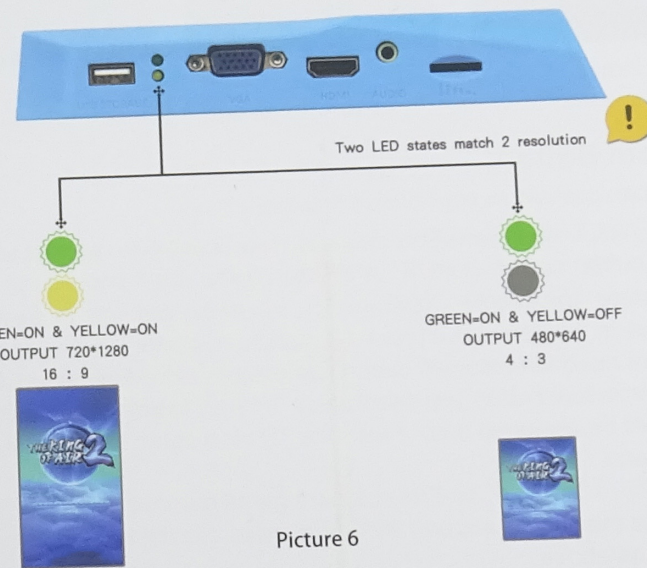
•Mainboard support download the game copy to the specified path of U disk or TF card to add the game (**Note:** the basic storage of the mainboard is 32GB, and the remaining 2GB storage is reserved for game save state and save high score, please do not to use it. If you need to add more games, please replace the U disk or TF card with larger capacity, Thank you for your cooperation)

## 3.Resolution settings:

The mainboard has two kinds of video output ports: HDMI and VGA, HDMI only support output 1280x720 resolution, VGA supports output of 1280x720 and 640x480, for example: if using VGA output, the output resolution is 1280x720, need to change the resolution to 640x480, so in the power off state, press and hold the setting button then turn on the power, release it after 3 seconds, the resolution will be changed to 640x480, and the same operation can be change back to 1280x720. (picture5/Picture6).



Picture 5



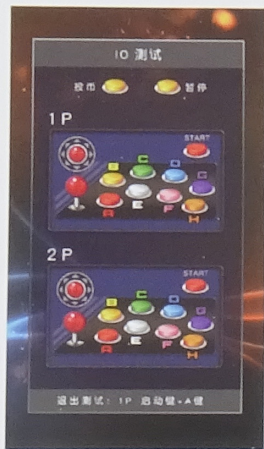
Picture 6

## 4.Setting Menu:

In the game menu or in the game, press the setting button to into the setting menu

## 4.1 IO Test:

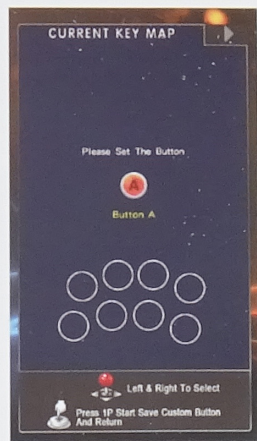
This option is to test the connection status of the coin selector, joystick and button of the console (picture 7).



Picture 7



Picture 8



Picture9

## 4.2 Custom Button:

This option can customize your button habitually uses.

**4.2.1 DEFAULT KEY MAP:** This option is mainboard 40p connect to arcade console button custom, hold 1P or 2P start button for 3 seconds to enter each custom state (picture 8) (picture 9), follow the prompts to custom the A-H button in the game and press 1P start save custom button and return. If you do not need to custom all button, just custom individual button. After custom individual button you need, press 1P start to complete custom, other buttons will be assigned auto! Press the 1P start again will save and back to setting menu.

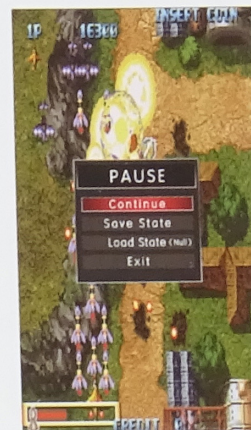
**4.2.2 GAMEPAD CUSTOM:** The standard game gamepad can be insert to the USB of the mainboard, support 90% of gamepad in the market, the custom is the same as above.

**4.2.3 RESTORES DEFAULT CUSTOM BUTTON:** This option has two options, restores the console default button and restores gamepad default! Move up and down to select, 1P start button confirm.

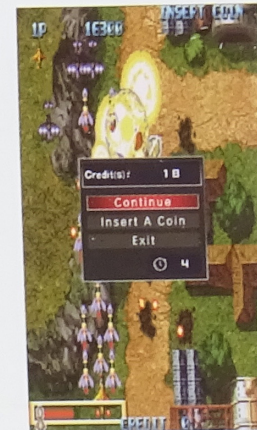
## 4.3 System Config:

### 4.3.1 Credit Setting:

[free play] is the family mode. at this time, pause is on by default and locked to pause menu to exit the game. (picture 10) [1:1...9:1...1:2...1:9], this is, set to coin mode.



Picture10



Picture11

### 4.3.2 Exit Game Mode:

This option is for coin mode, set the exit mode of back to the game menu in the game. It can be set to use [menu exit] [1P start + coin] [hold 1P start 3 seconds]

[Menu Exit] In the game, hold 1P start button for 3 seconds, will show the menu to select exit (picture 11), this mode, the central manager will record and save coins, it means that the coins inserted in the game menu or game are stored here first, if the remaining coins are not insert to the game, can be stored to return to the game menu, and can choose to enter other games to use. It can also cooperate with item 3 "pause menu: ON", use pause button to show exit menu quickly select exit.

[1P start+coin] In the game, hold 1P start, insert 1 coin, then exit to the game menu, 1 coin is valid, this coin can be used to run other games. It can also cooperate with 4.3.3 "pause menu: ON", use pause button to show exit menu quickly select exit.

[Hold 1P start 3 sec.] in the game, hold 1P start for 3 seconds to directly exit to the game menu, this mode cannot record and store any coins to return to the game menu. It can also cooperate with 4.3.3 "pause menu: ON", use pause button to show exit menu quickly select exit.

#### 4.3.3 Pause Menu:

[ON]/[OFF], cooperate with item 2 "Exit Game Mode", convenient and quick exit. (If need to show and use pause menu, need to expand a button in the solder side T pin signal and GROUND).

#### 4.3.4 Auto Exit:

[ON]: If joystick and button are not operated for 3 minutes in the game, it will auto exit to game menu.

[OFF]: This function will be closed, it will not auto exit to game menu.

#### 4.3.5 Select Game Mode:

This option can be set in the game menu, whether need to after insert coin can move the joystick to select the game. This setting cannot be set in free play status. In [Menu exit] or [1P start+coin] mode, you can set [Always]/[With Coin]

[With Coin]: After insert coin, can move joystick to select games.

[Always]: Without insert coin can select game at any time.

#### 4.3.6 Quality Optimization:

This option is not enabled

#### 4.3.7 Scanning Line:

This function cannot be used

#### 4.3.8 Timer Mode:

[Home Game Timer Only]: Arcade games insert coin uses coin mode to play games, and home games insert coin uses timer mode to play games

[All Timer]: Arcade games and home games insert coin both uses timer mode to play games.

#### 4.3.9 Game time:

In timer mode, how many minutes=1 Coin, 1~60 minutes can be set.

#### 4.3.10 Gamepad Setting:



This mode is enable 1P and 2P arcade joystick and button(40p GPIO) + two gamepads to play games, and support 4 players play games at the same time.



This mode is enable 1P arcade joystick and button + two gamepads to play games, and support 3 players play games at the same time.



This mode is closed 1P and 2P arcade joystick and button just enable two gamepads to play games.

### 4.4 Game Setting:

#### 4.4.1 Difficult & Lives Setting:

Press A button enter into the difficult & lives setting menu (picture 12). Move the joystick to choose the game, press A button to set the difficult; press B button to set

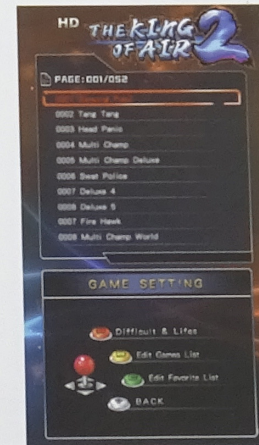
lives (The game cannot be set without number display)

(picture 13); press C button

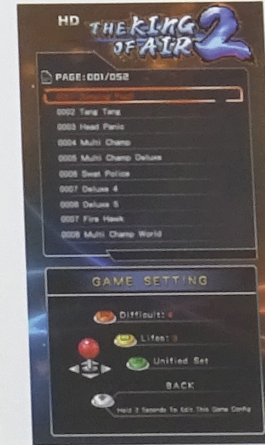
will set the selected game as

a unified standard setting;

press 1P start button back.




Picture 12




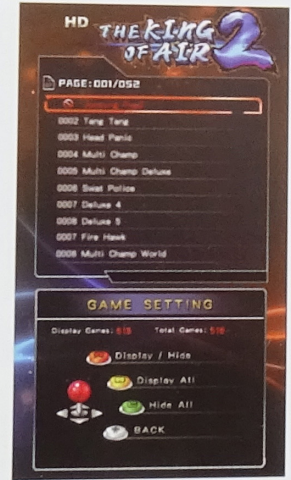
Picture 13

### 4.4.2 Edit Games List:

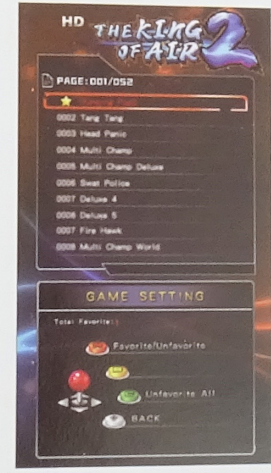
Press B button enter into the display/hide game setting menu(picture14); Move the joystick to choose the game you want to setup.Press A button to display/hide game,after hidden the game,  will appear in front of the hidden game;press B button will display all games.If you just want to run a game,after select it then press C button hide all game,every time after the turn on the power will auto run this game;press 1P start button back.

### 4.4.3 Edit Favorite List:

If there are some games you like very much,you can favorite it,press B to enter edit favorite list (picture15);press A button to favorite,  will appear in front of the game name,it will display on top of the game menu.You can favorite of 99 games.Press C to cancel all favorite.Press 1P start button back.



Picture 14

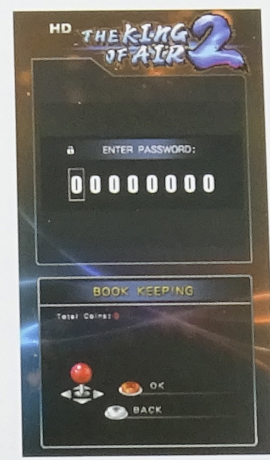


Picture 15

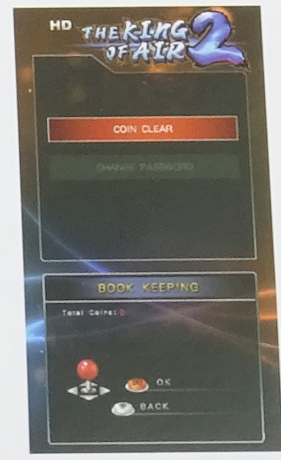
### 4.5 Book Keeping:

Mainboard can record all the number of insert coin,all insert coin will be recorded and displayed in [Total coins:],it is under book keeping.If you need to clean the total coin records,please input password(picture16),the default password is 55555555, joystick up & down change the number,left & right is next and return. After into can clean coin records and change the password(picture17).Select change password, enter your old password to confirm,and then enter a new password.

Note: if you change the password, please keep it properly to avoid unnecessary loss. If you need help, please contact dealer.



Picture 16



Picture 17



#### 4.6 Language:

Mainboard supports three languages: English/ Spanish / Korean.

#### 4.7 Boot Demo Movies:

When you lock a game in edit game list,you can choose [ OFF ], when you turn on power the mainboard will not display boot demo video.

#### 4.8 Save Setting:

Press A button to save the setting,it will show [ YES / NO ],if you need to save you all settings, please select [ YES ],without save please select [ NO ]; A button OK,then the screen will show SAVING...,when show SAVING..., please do not turn off the power, the mainboard will auto restart and show the game menu.

#### 4.9 Factory Setting:

Select [ YES ] will restore the factory settings.Select [ NO ] without any settings.

### 5.Abnormal Condition Diagnosis of Using :

Error Description	Reason	How to solve
Turn on power has no response,mainboard power led is not light.	Power supply may be Abnormal Console is abnormal	Try to replace the power supply with the same parameters or contact to the dealer.
No video signal	Please check whether the HDMI cable or VGA cable is connected normally and whether the input signal of the monitor is set correctly	Replace the display cable or monitor.
No sound	Speaker wires abnormal error or speaker damgae	Connect the wire correctly or replace the speaker
Press button is invalid	Button wire connection error or button damage	Connect the wire correctly or replace the button

\*(Accessories provided may vary according to the version as there may be some new changes or upgrades of it ,so it may vary without prior notice)

**Just for Your Health concern, we advise the game hours to be limited. Please DO NOT watch the Monitor / TV for a long ime in a dark environment and take rest at different time intervals.**